

GUIDELINES

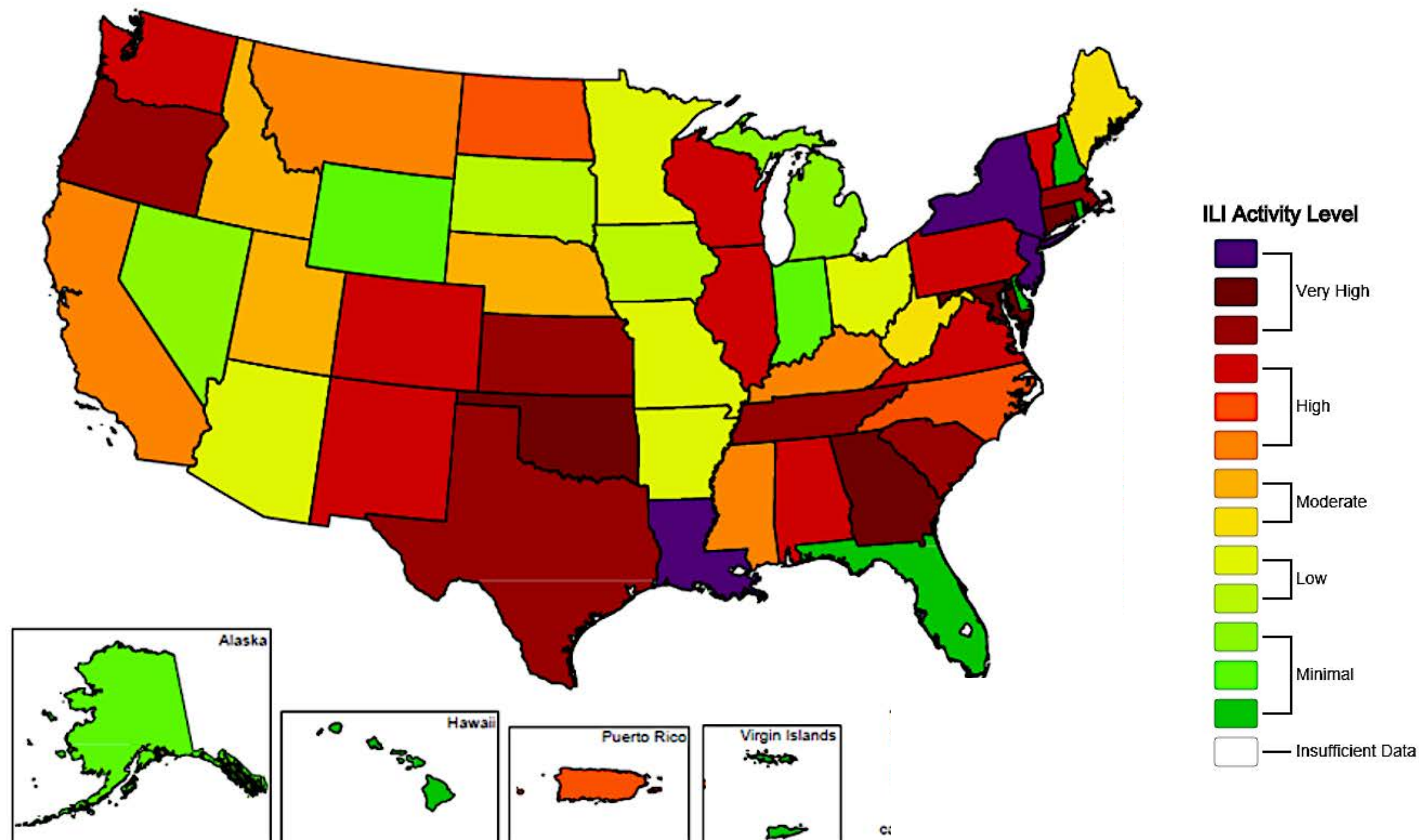
OPENING UP

AMERICA AGAIN



Influenza-Like Illness (ILI) Activity Level Indicator

Determined by Data Reported to ILINet



Week Ending
March 28, 2020

2019-2020
Influenza Season
Week 13



Determined by Data Reported to ILINet



Very High

High

Moderate

Low

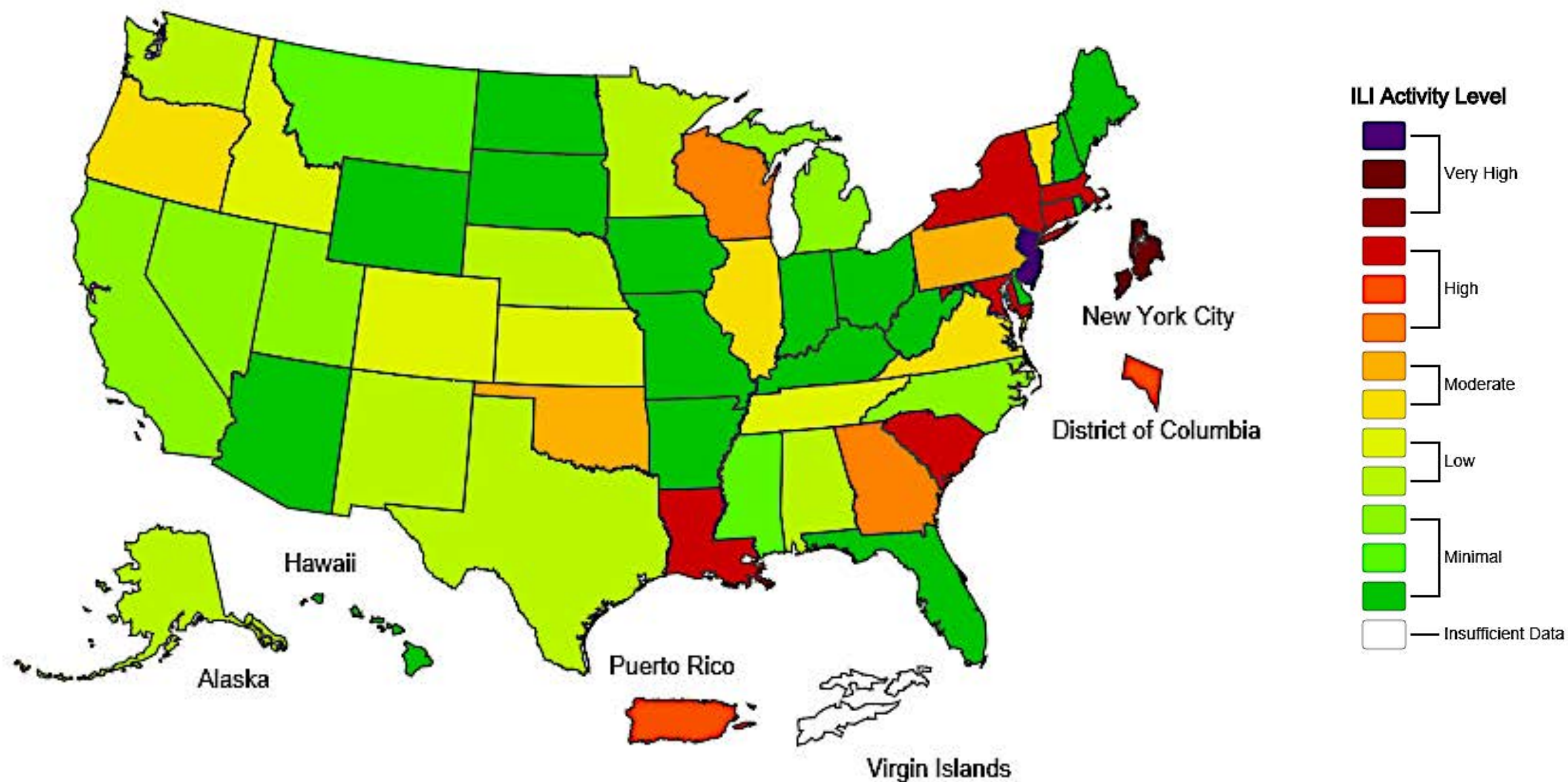
Minimal

- Insufficient Data

Week Ending April 4, 2020

2019-2020 Influenza Season Week 14

Determined by Data Reported to ILINet



Week Ending
April 11, 2020

2019-2020 Influenza Season Week 15



OPENING UP AMERICA AGAIN

Proposed Phased Approach

BASED ON **UP-TO-DATE DATA** AND READINESS

MITIGATES RISK OF RESURGENCE

PROTECTS THE MOST VULNERABLE

IMPLEMENTABLE ON **STATEWIDE OR COUNTY-BY-COUNTY** BASIS AT GOVERNORS' DISCRETION



Overview

CRITERIA

The data-driven conditions each region or state should satisfy before proceeding to a phased opening.

PREPAREDNESS

What States should do to meet the challenges ahead.

PHASE GUIDELINES

Responsibilities of individuals and employers during all phases, and in each specific phase of the opening.



Proposed State or Regional Gating Criteria

(Satisfy Before Proceeding to Phased Opening)

SYMPTOMS

Downward trajectory of influenza-like illnesses (ILI) reported within a 14-day period

AND

Downward trajectory of COVID-like syndromic cases reported within a 14-day period

CASES

Downward trajectory of documented cases within a 14-day period

OR

Downward trajectory of positive tests as a percent of total tests within a 14-day period (flat or increasing volume of tests)

HOSPITALS

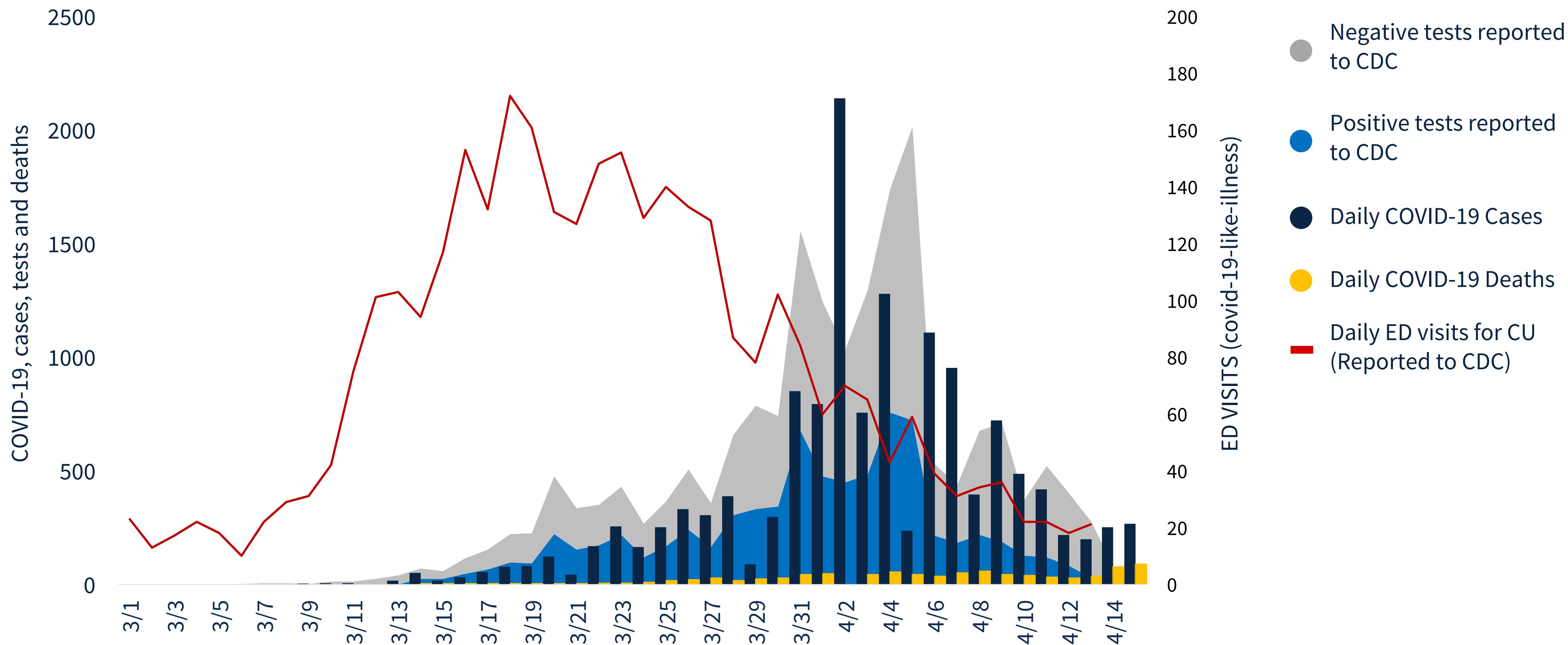
Treat all patients without crisis care

AND

Robust testing program in place for at-risk healthcare workers, including emerging antibody testing

*State and local officials may need to tailor the application of these criteria to local circumstances (e.g., metropolitan areas that have suffered severe COVID outbreaks, rural and suburban areas where outbreaks have not occurred or have been mild). Additionally, where appropriate, Governors should work on a regional basis to satisfy these criteria and to progress through the phases outlined below.

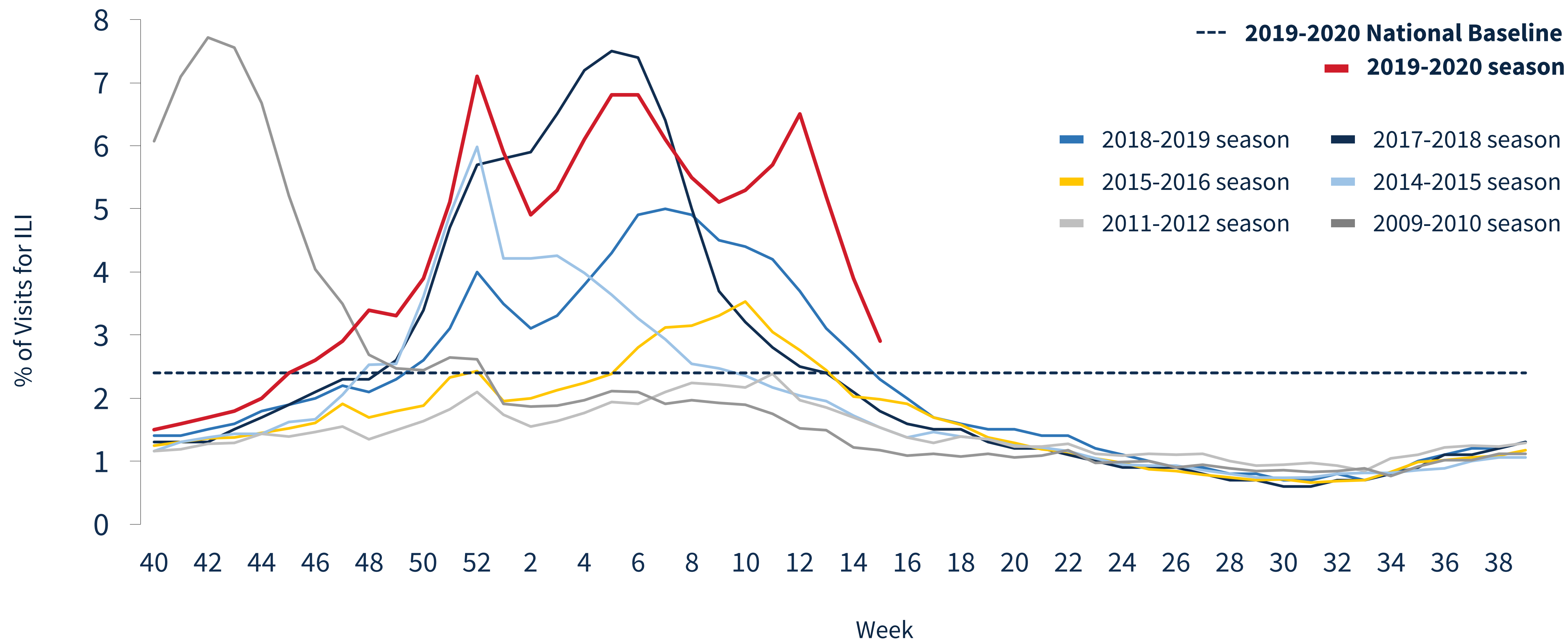
Trends in New Orleans – Metairie, LA



Percentage of Visits for Influenza-like Illness (ILI)

Reported by the U.S. Outpatient Influenza-like Illness Surveillance Network (ILINet)

Weekly National Summary, 2019-2020 and Selected Previous Seasons





Core State Preparedness Responsibilities

TESTING & CONTACT TRACING

- ✓ Ability to quickly set up safe and efficient screening and testing sites for symptomatic individuals and trace contacts of COVID+ results
- ✓ Ability to test Syndromic/ILI-indicated persons for COVID and trace contacts of COVID+ results
- ✓ Ensure sentinel surveillance sites are screening for asymptomatic cases and contacts for COVID+ results are traced (sites operate at locations that serve older individuals, lower-income Americans, racial minorities, and Native Americans)

HEALTHCARE SYSTEM CAPACITY

- ✓ Ability to quickly and independently supply sufficient Personal Protective Equipment and critical medical equipment to handle dramatic surge in need
- ✓ Ability to surge ICU capacity

PLANS

- ✓ Protect the health and safety of workers in critical industries
- ✓ Protect the health and safety of those living and working in high-risk facilities (e.g., senior care facilities)
- ✓ Protect employees and users of mass transit
- ✓ Advise citizens regarding protocols for social distancing and face coverings
- ✓ Monitor conditions and immediately take steps to limit and mitigate any rebounds or outbreaks by restarting a phase or returning to an earlier phase, depending on severity



States Must Prepare

TESTING & CONTACT TRACING

Safe and efficient screening and testing sites for symptomatic individuals and trace contacts

HEALTHCARE SYSTEM CAPACITY

Independently supply sufficient Personal Protective Equipment and critical medical equipment

Ability to surge ICU capacity

PLANNING

Including: Health and safety of workers in critical industries

Monitor conditions and mitigate any rebound or outbreaks

GOOD HYGIENE:

Wash your hands

Avoid touching your face

Disinfect frequently used items and surfaces

Use face coverings while in public

Follow state and local guidance as well as CDC guidance

If you feel sick, stay home

**Guidelines
for all phases**

INDIVIDUALS

DEVELOP POLICIES REGARDING:

**Social distancing and
protective equipment**

Temperature checks

**Use and disinfection of
high-traffic areas**

Business travel

**Monitor workforce for symptoms.
Do not allow symptomatic people
to return to work until cleared by
a medical provider.**

**Develop policies for workforce
contact tracing.**

**Guidelines
for all phases**

EMPLOYERS



OPENING UP AMERICA AGAIN

Phase One

FOR STATES AND REGIONS

THAT SATISFY THE GATING CRITERIA



VULNERABLE INDIVIDUALS
shelter in place

When in public, **MAXIMIZE
PHYSICAL DISTANCE**

Avoid socializing in groups
of **MORE THAN 10 PEOPLE**

**MINIMIZE NON-ESSENTIAL
TRAVEL** and adhere to CDC
guidelines



Consider special accommodations
for **VULNERABLE POPULATIONS**

ENCOURAGE TELEWORK
whenever possible

Return to work **IN PHASES**

MINIMIZE non-essential travel



Phase One

SPECIFIC TYPES OF EMPLOYERS

Schools currently closed should **REMAIN CLOSED**

Visits to senior living facilities and hospitals should be **PROHIBITED**

Large venues (including sit-down dining) can operate under strict **PHYSICAL DISTANCING** protocols

Gyms can open if they adhere to **STRICT PHYSICAL DISTANCING** and sanitation protocols

Elective surgeries **CAN RESUME** on an outpatient basis



OPENING UP AMERICA AGAIN

Phase Two

FOR STATES AND REGIONS WITH NO EVIDENCE OF
A REBOUND AND THAT SATISFY THE GATING
CRITERIA A SECOND TIME



Phase Two

INDIVIDUALS

VULNERABLE INDIVIDUALS
continue to shelter in place

When in public, **MAXIMIZE
PHYSICAL DISTANCE**

Avoid social settings of
MORE THAN 50 PEOPLE

Non-essential travel **CAN
RESUME**



Continue to **ENCOURAGE
TELEWORK**

CLOSE common areas

Non-essential travel **CAN RESUME**

Consider special accommodations
for **VULNERABLE POPULATIONS**



Phase Two

SPECIFIC TYPES OF EMPLOYERS

Schools, daycares, and camps **CAN REOPEN**

Visits to senior living facilities and hospitals should be **PROHIBITED**

Large venues can operate under **MODERATE** physical distancing protocols

Elective surgeries **CAN RESUME** on an outpatient and in-patient basis



OPENING UP AMERICA AGAIN

Phase Three

FOR STATES AND REGIONS WITH NO EVIDENCE OF
A REBOUND AND THAT SATISFY THE GATING
CRITERIA A THIRD TIME

Phase Three

INDIVIDUALS

Vulnerable individuals **CAN RESUME** public interactions, but should practice physical distancing

Low-risk populations should **MINIMIZE** time spent in crowded environments



Phase Three

EMPLOYERS

RESUME unrestricted staffing of worksites



Phase Three

SPECIFIC TYPES
OF EMPLOYERS

Visits to senior care facilities and hospitals **CAN RESUME**

Large venues can operate under **LIMITED** physical distancing protocols

Gyms can **STAY OPEN** if they adhere to standard sanitation protocols

OPENING UP AMERICA AGAIN





Appendix

Vulnerable Individuals

1. Elderly individuals.

2. Individuals with serious underlying health conditions, including high blood pressure, chronic lung disease, diabetes, obesity, asthma, and those whose immune system is compromised such as by chemotherapy for cancer and other conditions requiring such therapy.